



REC // FULL TRANSMISSION // OAKLAND CA

SLAPPERS ONLY! is a ground-breaking 5-piece musical experience from Oakland, CA bringing realtime studio-grade production to the live stage. You'll hear deep influences from the worlds of House, Trance, Jungle, and Bay Area funk, following in the footsteps of envelope-pushing artists such as LCD Soundsystem, Thundercat, MNDSGN, and Madlib. Approaching EDM with an ethos of jazz improvisation, the group synthesizes a union that is as freakish as it is **CONTAGIOUS**.

Founded by producer and saxophonist Madison Bohrer (Bohrer Brothers Trio, Super Soul Bros, WHIRL'D, Latin Heat) with a single intention: curating the highest grade **TOP-SHELF BASS** and wild improv scientifically engineered to induce a **stank face**. Every performance is 100% improvised, 100% unique, and **100% SLAPS**.

The group is a close-knit collective of experienced professional jazz musicians with audio-engineering backgrounds, DoorDashing high-level musicality and **IMPECCABLE TASTE** to a party full of slamming live-programmed drum machines and huge soundscapes. The slaps keep you on your feet – but the unpredictable electricity of being **RAPTURED** into a full exploration journey through the cosmos keeps you on your toes.

100%

IMPROVISED

5

OPERATORS

1/1

EVERY SET
UNIQUE



// SONIC FREQUENCIES

HOUSE

TRANCE

JUNGLE

BAY AREA FUNK

JAZZ IMPROVISATION

EDM

// TRANSMISSION LINEAGE

LCD SOUNDSYSTEM

THUNDERCAT

MNDSGN

MADLIB

// PAYLOAD

LIVE-PROGRAMMED DRUM MACHINES

HUGE SOUNDSCAPES

TOP-SHELF BASS

REALTIME STUDIO PRODUCTION

> THE COLLECTIVE

PHOTO ↔ NAME PAIRING - SIMON TO CONFIRM

OP_01



MADISON BOHRER

SAX / DRUM MACHINE / PROD

OP_02



COLIN

BASS

OP_03



JULIAN

INSTRUMENT TBC

OP_04



SIMON

INSTRUMENT TBC

OP_05



CLAY

LIVE AUDIO / ELECTRONICS

> LIVE TRANSMISSIONS

LISTEN + WATCH

PLACEHOLDER - DROP IN REAL LINKS



STREAM ON
BANDCAMP



STREAM ON
SOUNDCLOUD



WATCH ON
YOUTUBE



> STAGE CONFIG

TECH + FOH PATCH

DRAFT - CONFIRM BEFORE SENDING TO VENUES

// FOH PATCH – SELF-CONTAINED

SLAPPERS ONLY! run a self-contained stage. The band travels with a Mackie DL325 digital console and a full in-ear monitor rig – the house only handles FOH.

01	Master L	XLR
02	Master R	XLR
03	Stem – Madison (sax / drum machine / perc)	DCA
04	Stem – Colin (bass)	DCA
05	Stem – Julian	DCA
06	Stem – Simon	DCA
07	Stem – Clay (live audio / electronics)	DCA

House engineer balances **6 faders** – stereo Master plus 5 player groups. IEM aux mixes are locked from house access: monitors cannot be broken from FOH.

// MONITORING

- > 100% in-ear – no wedges required
- > 5 personal mixes, run on stage (DL325 + FaderPort at Madison's table)
- > IEM mixes locked out of the house console

// HOUSE PROVIDES

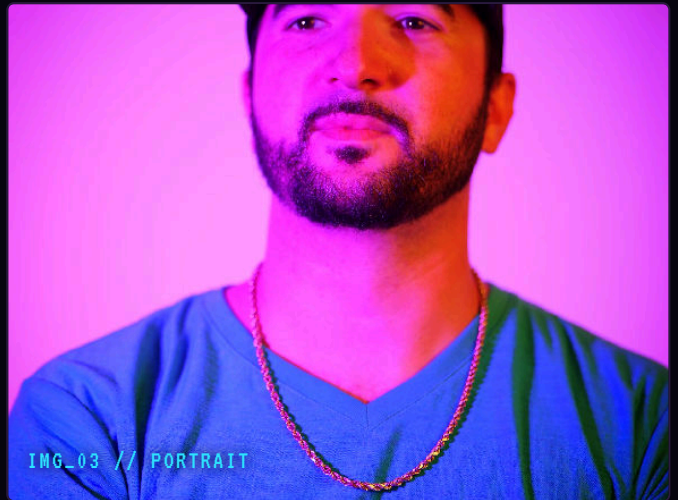
- > FOH console, PA & a competent engineer
- > 5 × power drops across the stage
- > Min. stage ~16ft × 12ft for the 5-piece
- > 1 sturdy 6ft × 2ft table for Madison's rig

// BAND PROVIDES

- > All backline, synths, drum machines & percussion
- > Mackie DL325 console + FaderPort + full IEM rig
- > DI boxes, cabling & the stereo + stem feed to FOH
- > Bass cab (sits behind Colin, facing audience – used as needed)
- > Full stage plot PDF on request



IMG_02 // GROUP



IMG_03 // PORTRAIT



IMG_01 // FULL BAND



IMG_04 // OPERATOR



IMG_05 // GROUP



IMG_06 // OPERATOR

ESTABLISH CONTACT

booking@slappersonly.com

BASE: OAKLAND, CA IG: @slappersonly MGMT: Madison Bohrer

BOOK A SET

DOWNLOAD EPK (PDF)



// 100% IMPROVISED // 100% UNIQUE // 100% SLAPS //

SLAPPERS ONLY! // OAKLAND, CA // 100% IMPROVISED // 100% SLAPS